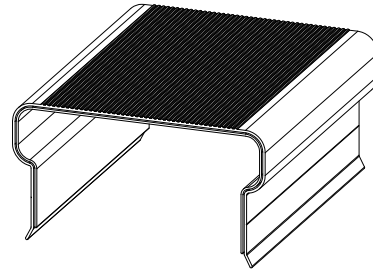


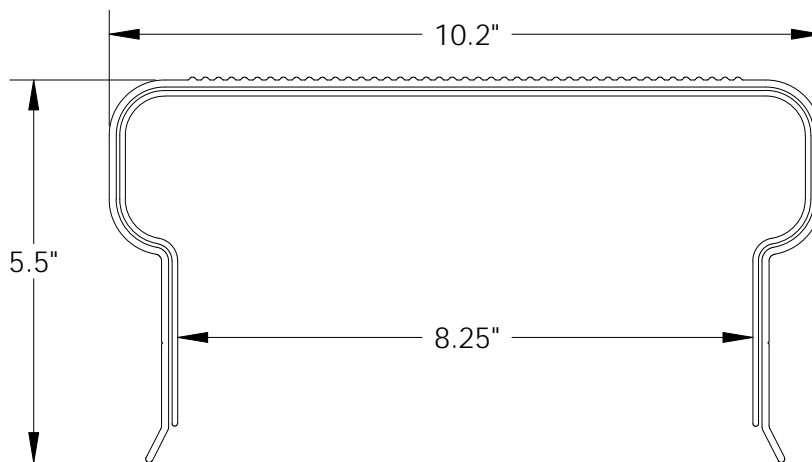


AW-850 STR Cap



Drawn: JAB Date: 11/30/09

Section Modulus (Z)	10.8 in ³	177 cm ³
Moment of Inertia (I)	55 in ⁴	2,289 cm ⁴
Outside Width	10.2 in	259 mm
Inside Width	8.25 in	210 mm
Material	6063-T6 Marine Grade Aluminum	
Sheet Piling Compatibility	SG-300, SG-325, SG-425, SG-550, GG-30	
Tie Rod Compatibility	AW 2.5" x 0.75" Rod Kit	
Recommended Accessories	Beveled PVC Washer, 45° and 90° AW-850/855 Corner Insert	
Standard Colors/Surface Treatment	Mill Finish, Grey, Clay, Anodized Marine Bronze	
Standard Packaging	20ft AW-850 Cap, SS and PVC Fasteners, 20ft Structural Insert	



Physical properties are defined by ASTM testing standards, The Aluminum Association Design Manual, and/or standard engineering practice. The values shown are nominal and may vary. The information found in this document is believed to be true and accurate. No warranties of any kind are made as to the suitability of any CMI product for particular applications or the results obtained there from. ShoreGuard, C-Loc, TimberGuard, GeoGuard, Dura Dock, Shore-All, and Gator Gates are registered trademarks of Crane Materials International. ArmorWare, Ultra Composite, GatorDocks, GatorBridge and CMI Waterfront Solutions are trademarks of Crane Materials International. United States and International Patent numbers 5,145,287; 6,000,883; 6,033,155; 6,053,666; D420,154; 6,575,667; 7,059,807; 7,056,066; 7,025,539; 7,393,482; Other patents pending. © 2009 Crane Materials International. All Rights Reserved.